

UHP-210

INTEGRATED SATELLITE ROUTER

SCPC

TDM/TDMA

HUBLESS TDMA

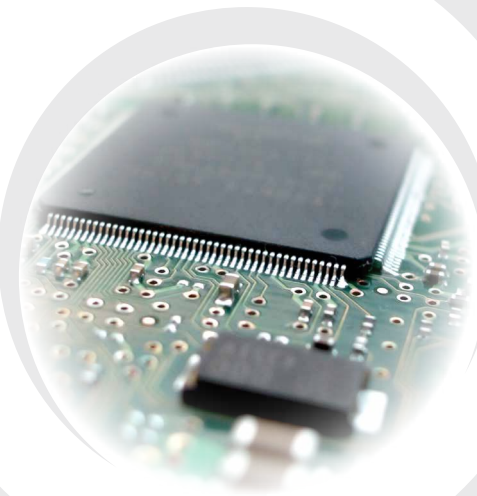
SW DEFINABLE

SMART REDUNDANCY

DUAL GATEWAY

UHP-210 Integrated Satellite Router is based on a new advanced hardware platform and is backward compatible with previous generations of UHP routers. It comprises multi-channel DVB and MF TDMA demodulators, a universal SCPC/TDMA modulator and a powerful IP router. The primary application of UHP-210 is complex remote TDM/TDMA or Hubless TDMA terminal with high throughput and multi-mode operation. This universal satellite router can also be used as a compact TDM/TDMA Hub.

Innovative algorithms for network access, resource allocation and data encapsulation as well as advanced modulation and coding, implemented in the UHP routers, ensure efficient utilization of satellite resource.

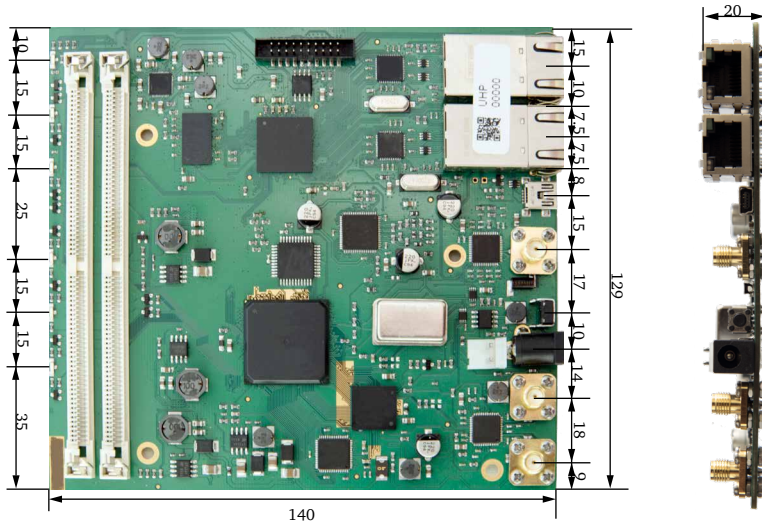


Multiple demodulators allow simultaneous reception of two TDM or SCPC carriers and group of TDMA mesh carriers from two distinct satellite beams or from two antennas. Universal modulator can instantaneously switch from TDMA burst mode to SCPC mode.

UHP-210 is implemented as a compact single card ideal for integration into third-party OEM products. The router card has LED indicators, SMA or F type IF connectors and user LAN interfaces. Optionally, the router card can be equipped with the asynchronous LVTTTL data port. Low power consumption and uniquely fast start upon power-up facilitate use of alternative power sources.

- World's fastest VSAT router with aggregate throughput up to 450 Mbps and powerful UHP-RTOS
- Two independent DVB demodulators with separate software-switchable IF inputs and rate up to 500 Mps
- Efficient DVB-S2/S2X ACM modulations with 5% or 20% roll-off and support for wideband HTS transponders
- Multichannel MF-TDMA demodulator with innovative protocol and proven efficiency of 96% vs. SCPC
- Adaptive coding and modulation (ACM) in forward and return channels, including SCPC and TDMA modes
- Various modes of operation and topologies: SCPC, TDM/TDMA, TDM/TDMA Mesh, Hubless TDMA
- HTS-ready VSAT with support of multiple beams, bands, satellites reception with traffic balancing
- Superior IP router productivity up to 190 000 PPS and rich set of supported protocols, multi-level QoS
- Layer 3 routing architecture and Layer 2 bridging mode with IPV6 transport
- Two Gigabyte Ethernet user ports with built-in switch simplifies scalability and connection of CPE
- Ultra-low latency VSAT system with round-trip delay about 570 ms for TDMA mode of operations
- Low power consumption, fast start, and extended range of operational temperatures
- 1:1 automatic redundancy without external controllers or M:N Smart Redundancy





UHP Beam Switching

feature uses OpenAMIP protocol to communicate with a mobile antenna controller to retrieve an actual geographic location and command antenna pointing, activate transmission, etc. UHP router selects the most appropriate satellite beam according to its current geographic position and pre-defined coverage maps, dynamically adjusts frequencies, levels and changes the mode of operation to ensure compatibility with new network.

UHP-210 INTEGRATED SATELLITE ROUTER SPECIFICATIONS

NETWORK		
Topology	Point-to-Point, Star, Dual-Gateway, Mesh	
Modes of operation	Software-defined router: SCPC, SCPC DAMA, TDM/SCPC, TDM/TDMA Star/Mesh, Hubless MF TDMA	
Network role	SCPC Modem, TDM/TDMA Terminal or Hub, Universal Controller of HTS Hub, Hubless Slave or Master	
Frequency bands	C, X, Ku, Ka, including multi-beam HTS satellites	
TDM (SCPC) CHANNEL	MODULATOR	DEMODULATOR
Standard	DVB-S2 / DVB-S2X with Adaptive Coding and Modulation	
Channels	One universal SCPC/TDMA modulator	Two demodulators with selectable IF inputs Rx1 and Rx2
Modulation	QPSK, 8PSK, 16APSK, 32APSK, 64APSK; Roll-off: 5% or 20%;	QPSK, 8PSK, 16APSK, 32APSK, 64APSK, 128APSK, 256APSK
FEC	1/4, 14/45, 1/3, 2/5, 9/20, 7/15, 1/2, 8/15, 11/20, 26/45, 3/5, 23/36, 2/3, 25/36, 32/45, 13/18, 3/4, 7/9, 4/5, 5/6, 77/90, 8/9, 13/45	All DVB-S2 & DVB-S2X MODCODs
Symbol Rate	300 kspcs - 65 Msps; step 1 kspcs (51 Msps @32APSK, 43 Msps @64APSK)	300 kspcs - 500 Msps
Data Rate	200 kbps - 225 Mbps	200 kbps - 225 Mbps
QoS	8-level prioritization, traffic policies, CIR, MIR, group QoS, hierarchic traffic shaper, FAP	
TDMA CHANNEL	MODULATOR	DEMODULATOR
Standard	LDPC TDMA with Adaptive Coding and Modulation	
Channels	One universal SCPC/TDMA modulator	Four-channel MF-TDMA demodulator
Modulation	QPSK, 8PSK, 16APSK; Roll-off: 5%, 20%	QPSK, 8PSK, 16APSK
FEC	1/2, 2/3, 3/4, 5/6	1/2, 2/3, 3/4, 5/6
Symbol Rate	100 kspcs - 8 Msps; step 1 kspcs	100 kspcs - 8 Msps; (8 Msps aggregate for all channels)
Data Rate	67 kbps - 26.5 Mbps	67 kbps - 26.5 Mbps
TDMA Protocol	Frame 50 -1000 ms, 14 slot sizes, manageable minimal bandwidth; slot-to-slot fast MF-TDMA hopping	
QoS	8-level prioritization, traffic policies, CIR, MIR, group QoS, hierarchic traffic shaper, FAP	
ROUTER		
Performance	Up to 190 000 packets per second	
Support	DSCP, multiple IP/VLANs, NAT*, proxy ARP, L2 Bridging, TCP Acceleration, Jumbo frames, AES-256	
Protocols	IPv4/IPv6*, IGMP, cRTP, SNMP, RIP, SNTP, TFTP, PPP, DHCP, DHCP Relay	
Management	HTTP interface, SNMP, Telnet, NMS with VNO support	
INTERFACES		
User LAN	2 x Gigabit 10/100/1000 Base-T	
Maintenance console	miniUSB, B female	
IF Rx (two inputs)	950-2150 MHz; Ref. 10 MHz/+5 dBm [RX2]; 13.5/18 VDC 0.75A; F type or SMA	
IF Tx	950-2150 MHz; - 46...-1 dBm; Ref. 10 MHz/+5 dBm; 24V/3A; F type or SMA	
MECHANICAL / ENVIRONMENTAL (IDU)		
Power	24 VDC; 12 W	
Operating temperature	-40 ⁰ ...+50 ⁰ C, humidity up to 90%	
Size / Weight	129x20x140 mm / 120 g	

These specifications are subject to change without notice

* Available in a future SW release



UHP Networks Inc.
6600 Trans-Canada Highway, Pointe-Claire (Montreal), Quebec, Canada H9R 4S2
T: +1-514-695-VSAT (8728) | F: +1-514-697-0186 | www.uhp.net | info@uhp.net

